



BRADLEY SOFTWARE

child support calculator & software since 1992



2023 Version Software Licensing Guide

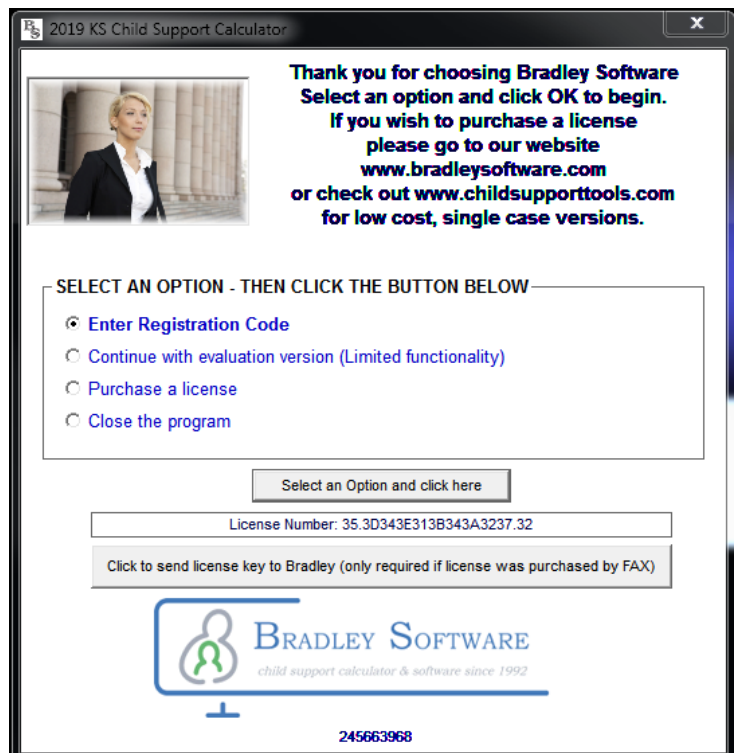
Licensing the 2023 version of Bradley software is basically the same as the 2020 programs. This guide will step you through this easy to follow process. Remember, you can always call Bradley Software for FREE Technical support at (913)491-4476 or send email to techsupport@bradleysoftware.com

Before you begin make sure that the TRIAL program is loaded on your computer. The registration code will enable the software to work only on the specific machine it is designated for.

Figure 1

Step 1

Run the Program and get to the Welcome Screen



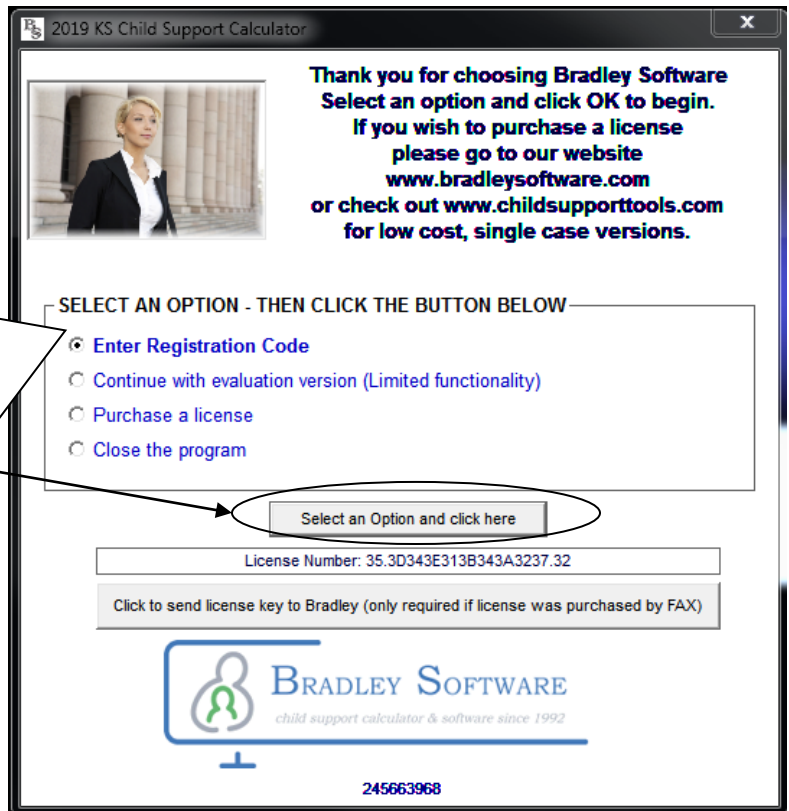


2023 Version Software Licensing Guide

Initial Licensing - when you know your registration code

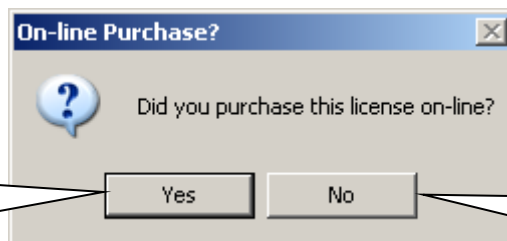
Step 2

Choose Enter Registration Number and click OK



Click on the ENTER REGISTRATION option and then click the button

“Select an Option...”
A window (shown below) appears asking about how you purchased the program.



If you click Yes, go to page 3

If you click No, go to page 4

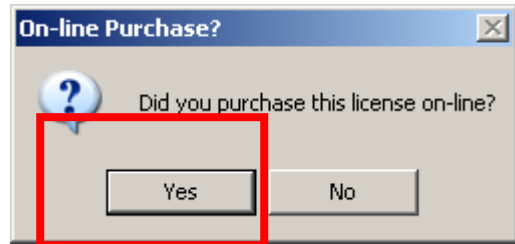


2023 Version Software Licensing Guide

Initial Licensing – if you purchased from our website

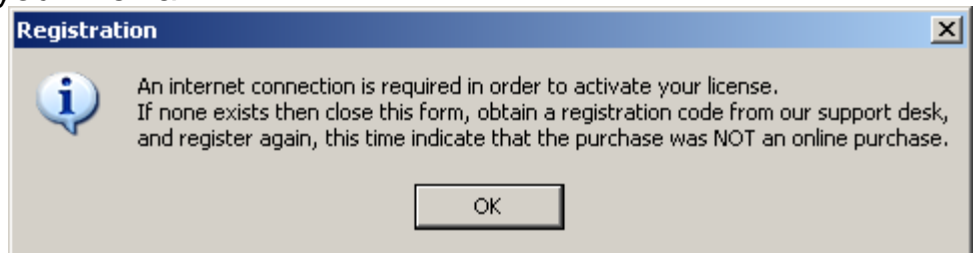
Step 2

You clicked YES



Step 3

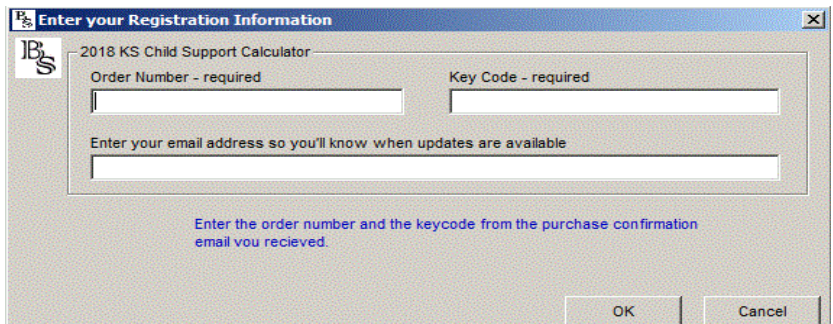
You MUST have an active Internet connection to register using this method. You also may have to temporarily turn off your firewall.



Step 4

Enter the Order number and keycode from the order confirmation email you received.

Enter your email address to receive updates via email.

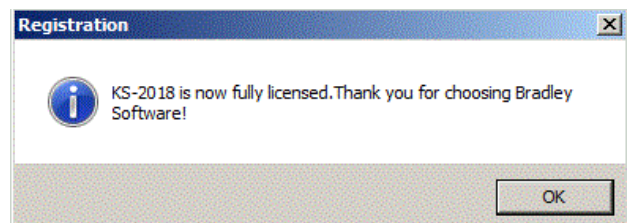


Click OK.

(Note: a 2023 license code will only work in the 2023 program).

If the codes are valid the following window appears.

Your program is now fully licensed!





2023 Version Software Licensing Guide

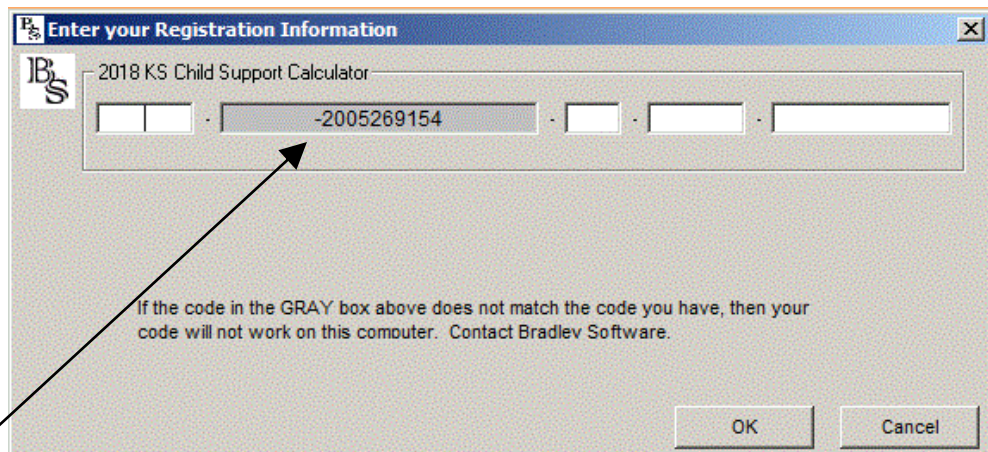
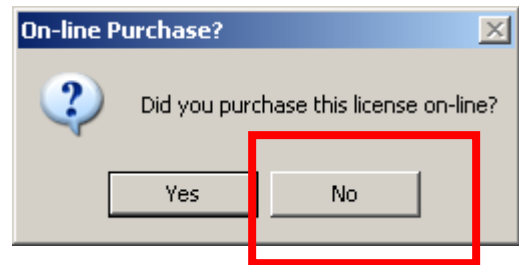
Initial Licensing – If you purchased via FAX

Step 2

You clicked NO

Step 3

Type the registration code into the areas supplied.



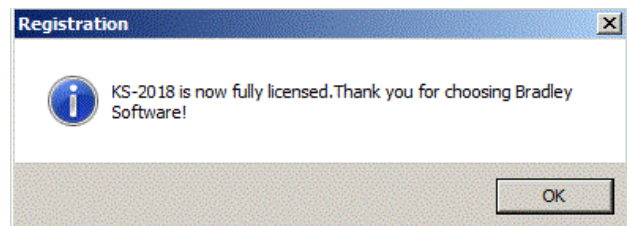
NOTE:

The grey text area is pre-filled and should match the registration code you received in an email. If it does not, then contact Bradley Software.

Click OK.

If the license code is valid the following window appears.

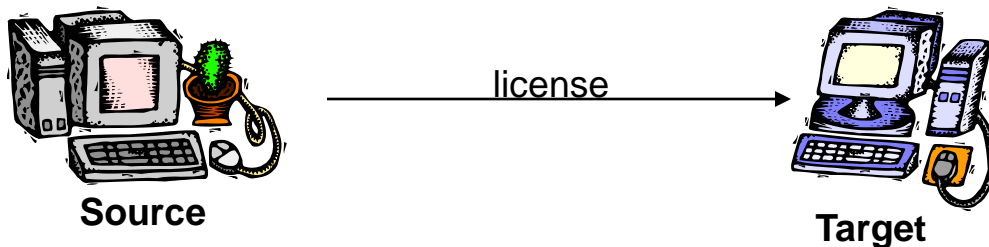
Your program is now fully licensed!



Transfer Overview

A license is like a token. Once you have one you can move it from one computer to another. But it can only exist on one computer at any given time.

This guide shows you how to transfer the license that exists on one machine (the Source), to another machine (the Target).



Basic Overview

(See page 3 for detailed instructions)

Step 1

Install the TRIAL program on the **TARGET** - get the license code (if needed)

Step 2

Run the program on the **SOURCE** - type in the license code from the **TARGET (if needed)**. You will receive a registration code. The **SOURCE** is now converted back to a TRIAL program.

Step 3

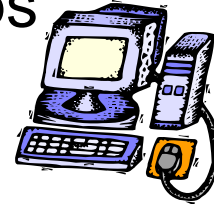
Type in the registration code from the **SOURCE**. The **TARGET** is now licensed for full use!

Go to page 6

Transfer – First Steps



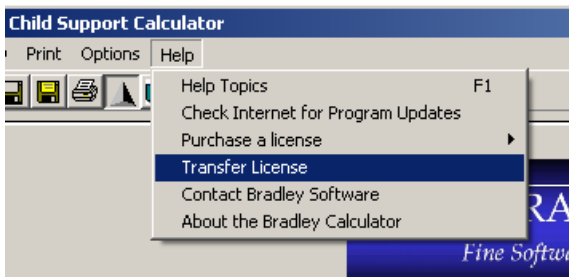
SOURCE computer
(The one you are moving the software from)



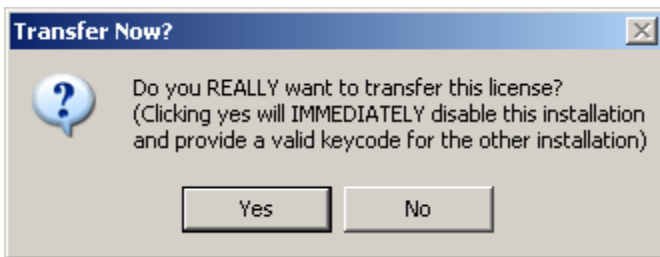
TARGET computer
(the one you are moving the software to)

Step 2

Run the licensed program. Click on HELP then click on TRANSFER LICENSE



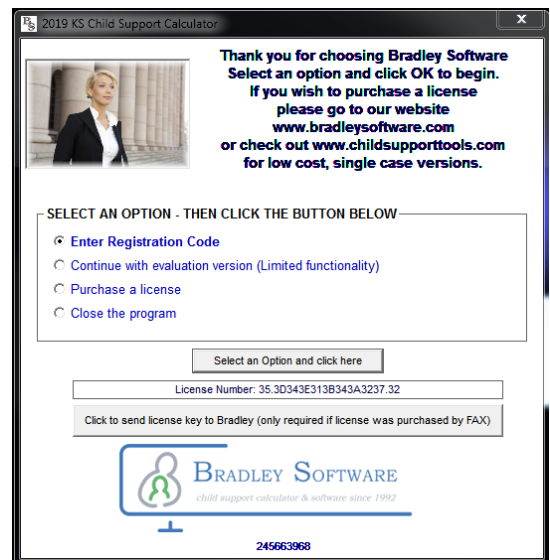
A new window appears.



Click YES

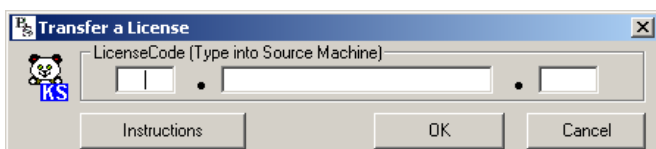
Step 1

Install the Trial program in the PC that you want to move the license to.

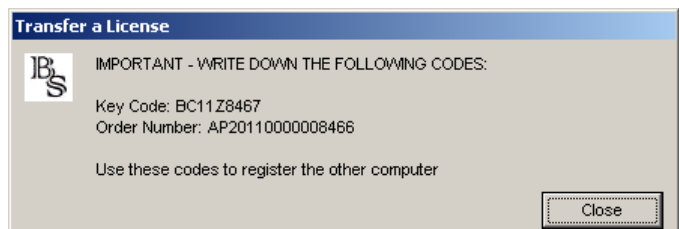


Leave it open to this screen
Go to Step 2 (shown on left)

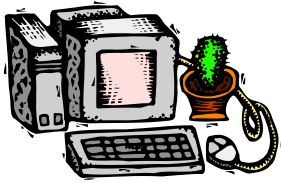
The next window will appear. Depending on how it looks follow these instructions



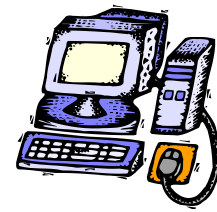
If it looks like this then contact Bradley Software



If it looks like this then go to page 7



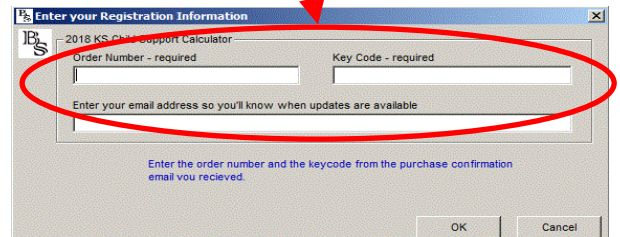
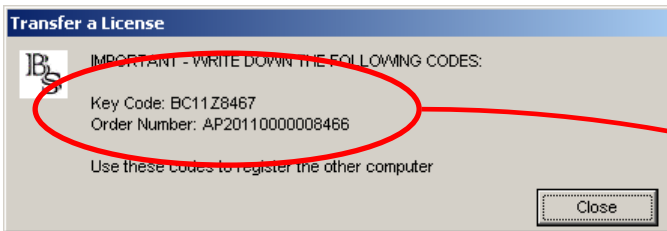
SOURCE computer
(The one you are moving the software from)



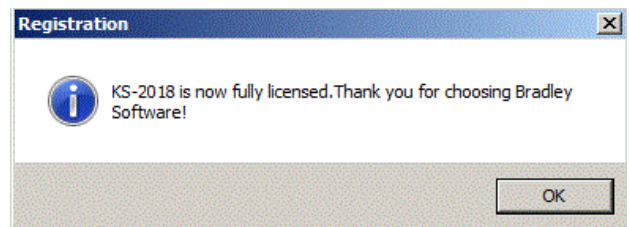
TARGET computer
(the one you are moving the software to)

Step 3

Enter the Order Number and Key Code from the SOURCE computer.



Click OK



**You are now done
and the new
computer is
licensed.**