



## 2012 Version Software Licensing Guide

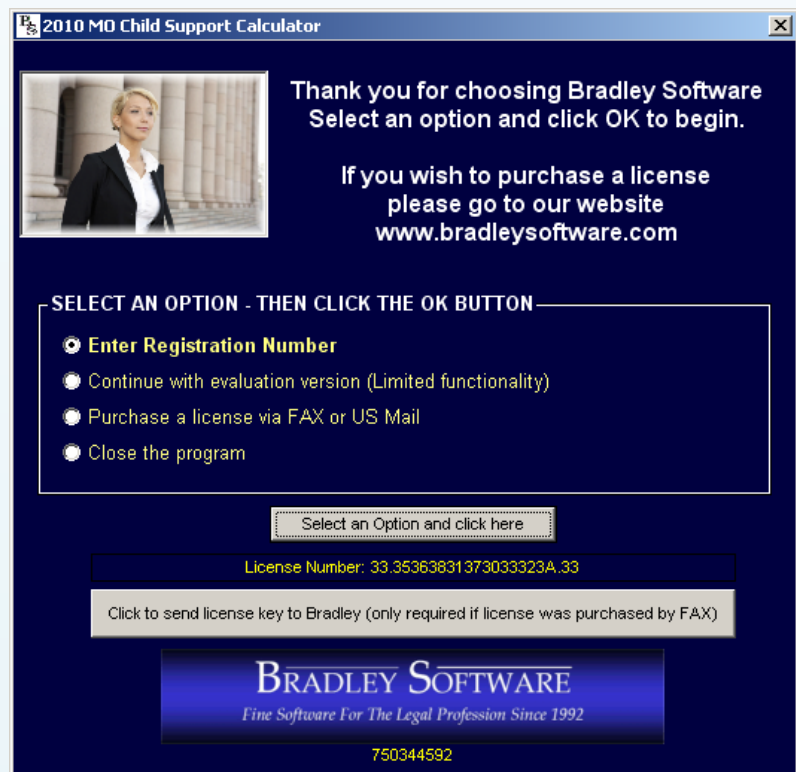
Licensing the 2012 version of Bradley software is basically the same as the 2011 programs. This guide will step you through this easy to follow process. Remember, you can always call Bradley Software for FREE Technical support at (913)491-4476 or send email to [techsupport@bradleysoftware.com](mailto:techsupport@bradleysoftware.com)

Before you begin make sure that the TRIAL program is loaded on your computer. The registration code will enable the software to work only on the specific machine it is designated for.

Figure 1

### Step 1

Run the Program and get to the Welcome Screen





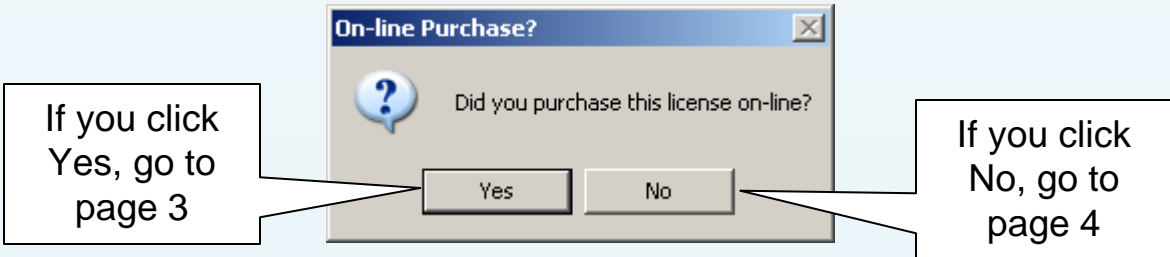
# 2012 Version Software Licensing Guide

## Initial Licensing - when you know your registration code

### Step 2

Choose Enter Registration Number and click OK

Click on the REGISTER option and click the OK button  
A window (shown below) appears asking about how you purchased the program.



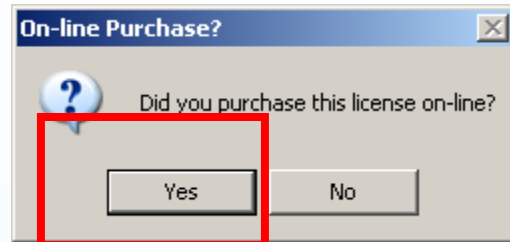


## 2012 Version Software Licensing Guide

### Initial Licensing – if you purchased from our website

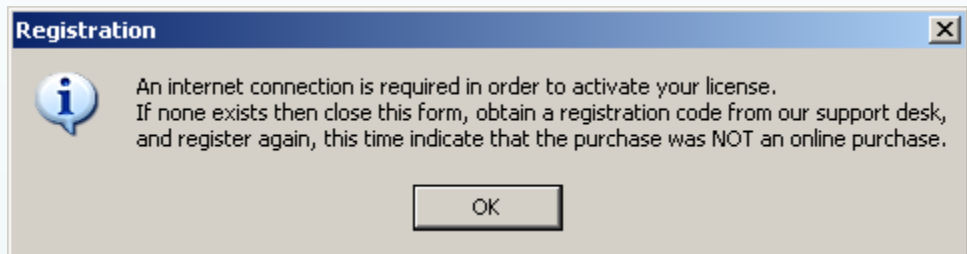
#### Step 2

You clicked YES



#### Step 3

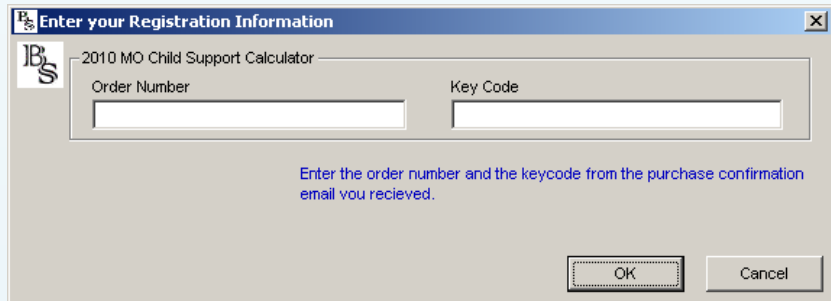
You MUST have an active Internet connection to register using this method. You may have to turn off your firewall.



#### Step 4

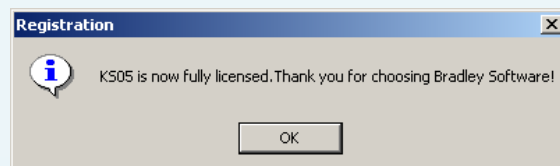
Enter the Order number and keycode from the order confirmation email you received.

Click OK.



If the codes are valid the following window appears.

Your program is now fully licensed!





## 2012 Version Software Licensing Guide

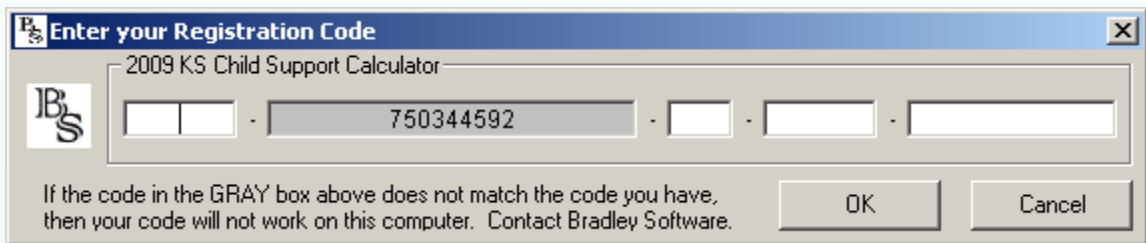
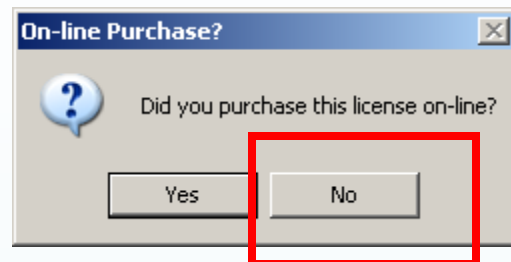
### Initial Licensing – If you purchased via FAX

#### Step 2

You clicked NO

#### Step 3

Type the registration code into the areas supplied.



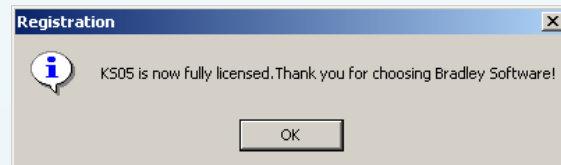
#### NOTE:

The grey text area is pre-filled and should match the registration code you received in an email. If it does not, then contact Bradley Software.

Click OK.

If the license code is valid the following window appears.

Your program is now fully licensed!

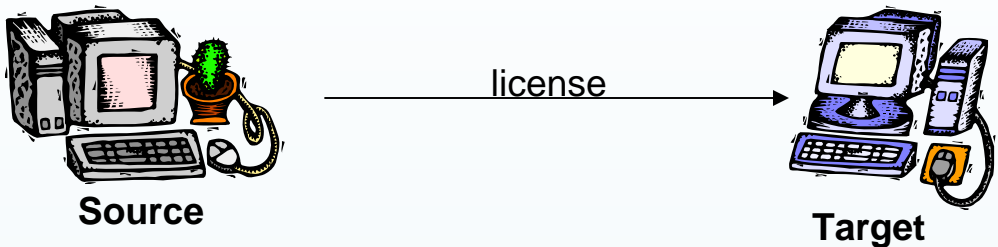


# 2012 Version Software Licensing Guide

## Used when you are transferring a license from another computer

A license is like a token. Once you have one you can move it from one computer to another. But it can only exist on one computer at any given time.

This guide shows you how to transfer the license that exists on one machine (the Source), to another machine (the Target).



### Basic Overview

(See page 6 for detailed instructions)

#### Step 1

Install the TRIAL program on the **TARGET** - get the license code.

#### Step 2

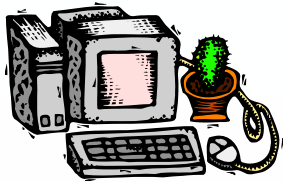
Run the REGISTRATION DASHBOARD program on the **SOURCE** - type in the license code from the **TARGET**. You will receive a registration code.

The **SOURCE** is now converted back to a TRIAL program.

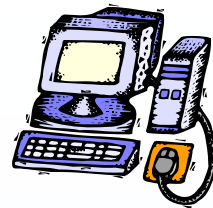
#### Step 3

Type in the registration code from the **SOURCE**. The **TARGET** is now licensed for full use!

Go to page 5



**SOURCE** computer  
(The one you are moving the software from)



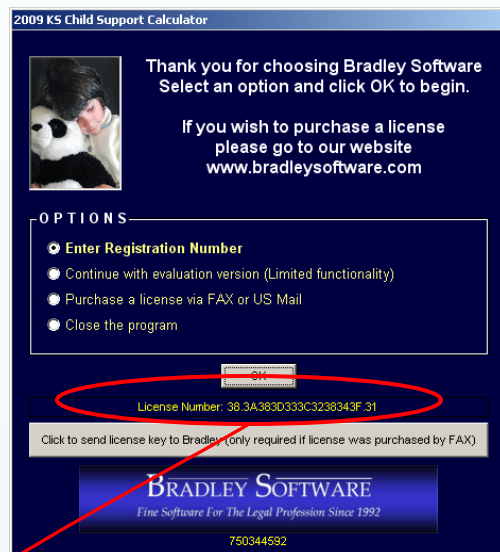
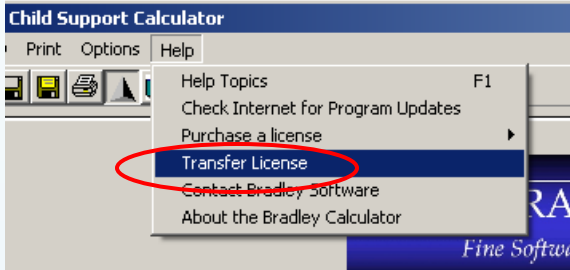
**TARGET** computer  
(the one you are moving the software to)

## Step 1

Run the Program you want to license.

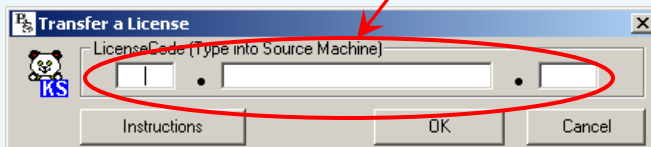
## Step 2

Run the licensed program. Click on HELP then click on TRANSFER LICENSE



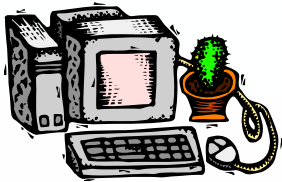
Write down the number circled above and take this code to the **SOURCE** computer.

A new window appears.



Type in the number from the **TARGET** Machine. Click OK

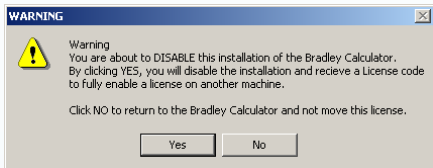
Go to page 6



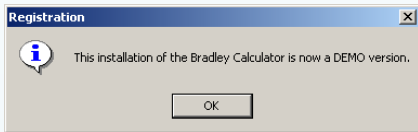
**SOURCE** computer  
(The one you are moving the software from)

## Step 2 (cont'd)

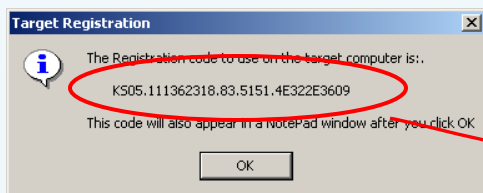
If you are absolutely sure, click YES



The Source program is now a TRIAL PROGRAM.

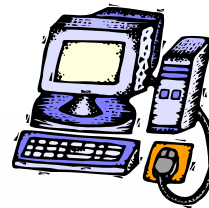


A registration code window appears. Write down the registration code.



Take the registration code to the TARGET computer.

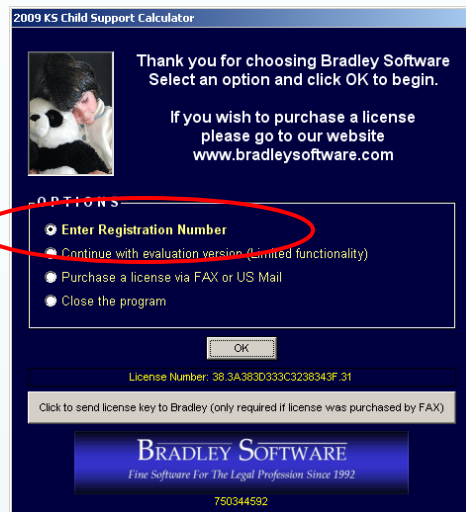
You are now finished with the Source computer. You can uninstall the Trial program if you want.



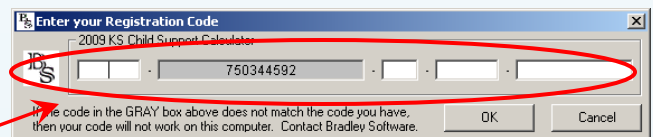
**TARGET** computer  
(the one you are moving the software to)

## Step 3

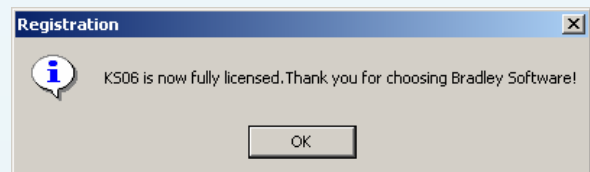
Select REGISTER and click on the OK button.



A new window appears.



Type the registration code from the SOURCE computer into the fields. Click NEXT



Congratulations! You are now finished and the license has been transferred to the Target computer.