

# 2009 License Transfer Guide

Used when you are transferring a license from another computer

A license is like a token. Once you have one you can move it from one computer to another. But it can only exist on one computer at any given time.

This guide shows you how to transfer the license that exists on one machine (the Source), to another machine (the Target).



## Basic Overview

(See page 6 for detailed instructions)

### Step 1

Install the TRIAL program on the **TARGET** - get the license code.

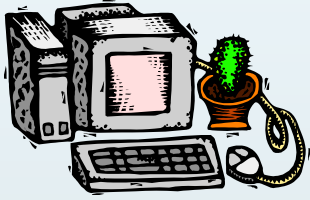
### Step 2

Run the REGISTRATION DASHBOARD program on the **SOURCE** - type in the license code from the **TARGET**. You will receive a registration code.

The **SOURCE** is now converted back to a TRIAL program.

### Step 3

Type in the registration code from the **SOURCE**. The **TARGET** is now licensed for full use!



**SOURCE** computer  
(The one you are moving the software from)



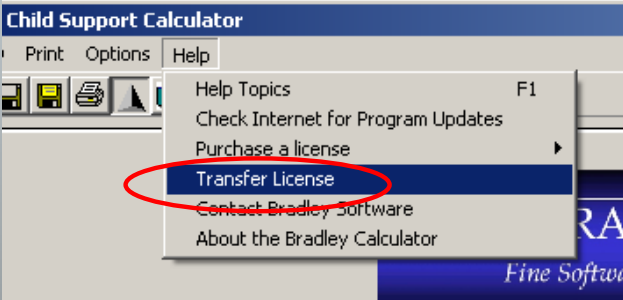
**TARGET** computer  
(the one you are moving the software to)

## Step 1

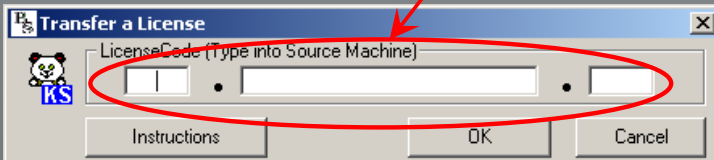
Run the Program you want to license.

## Step 2

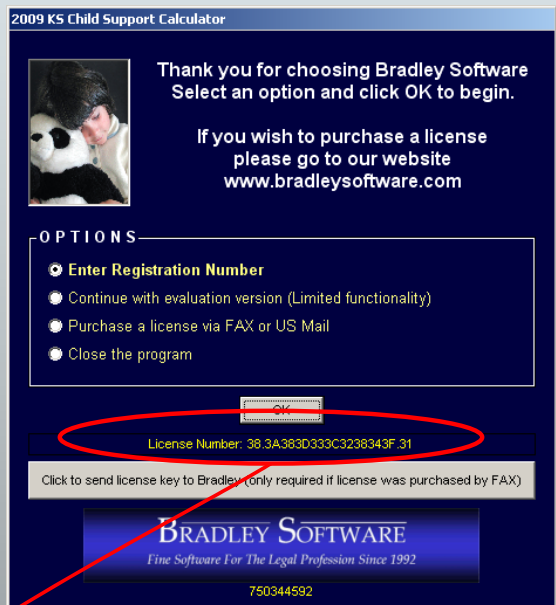
Run the licensed program. Click on **HELP** then click on **TRANSFER LICENSE**



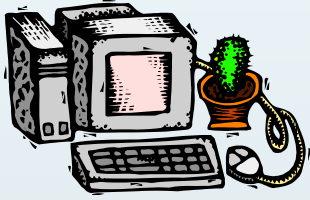
A new window appears.



Type in the number from the **TARGET** Machine. Click **OK**



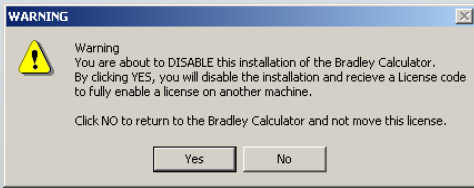
Write down the number circled above and take this code into the **SOURCE** computer.



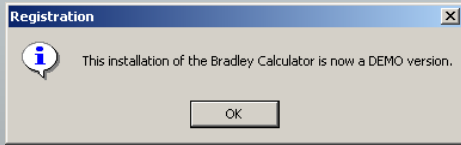
**SOURCE** computer  
 (The one you are moving the software from)

Step 2 (cont'd)

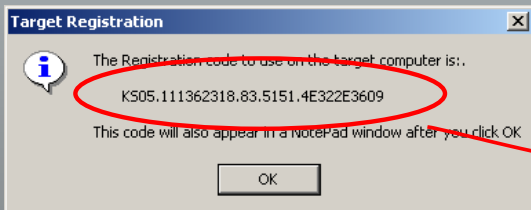
If you are absolutely sure, click YES



The Source program is now a TRIAL PROGRAM.



A registration code window appears. Write down the registration code.



Take the registration code to the TARGET computer.

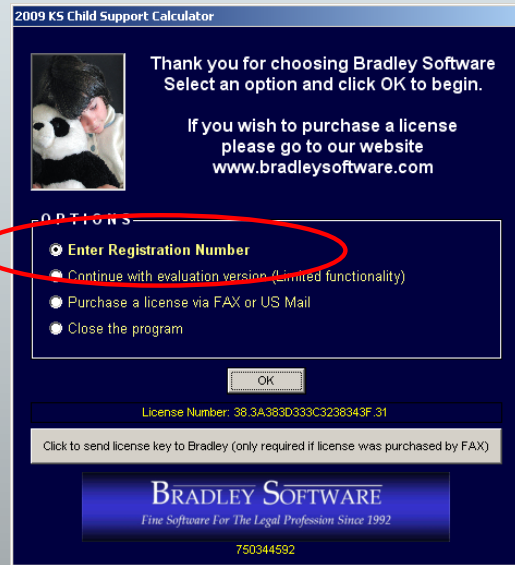
You are now finished with the Source computer. You can uninstall the Trial program if you want.



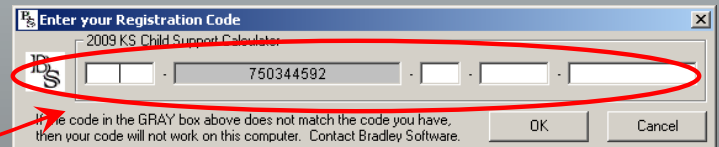
**TARGET** computer  
 (the one you are moving the software to)

Step 3

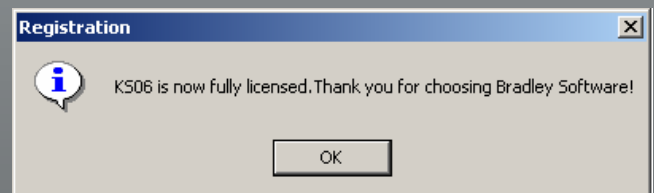
Select REGISTER and click on the OK button.



A new window appears.



Type the registration code from the SOURCE computer into the fields. Click NEXT



Congratulations! You are now finished and the license has been transferred to the Target computer.